



GENERAL DETAILS

Vessel Type	<i>Belt discharger</i>	Shipyard	<i>Namura Shipbuilding Co</i>	IMO Number	<i>7929970</i>
Port of Registry	<i>Nassau</i>	Year of Built	<i>1981</i>	Call Sign	<i>C6TL6</i>
Flag	<i>Bahamas</i>	Class. Society	<i>Nippon Kaiji Kyokai</i>	Ex-Name	<i>Sun Arrow</i>

TECHNICAL DETAILS

Tonnage		Dimension		Machinery	
Hull Type	<i>Single Sides / Double Bottom</i>	Length	<i>225.03 m</i>	Main Engine	<i>SULZER 6RND76M</i>
Dead Weight	<i>64215</i>	Breadth	<i>32.26 m</i>	Power / Speed	<i>14400 bhp / 13.0 knt</i>
Gross Tonnage	<i>35748</i>	Depth	<i>16.64 m</i>	Aux Engine	<i>2 x Yanmar 6UAL-ST</i>
Nett Tonnage	<i>21276</i>	Draft	<i>12.915 m</i>	Aux Engine	<i>1 x Steam Turbogenerator</i>

CARGO GEAR & CAPACITY DETAILS

Cargo Gear

2 x 40 ts Travelling Pulleman Gantry Cranes

8.5 mtr outreach port side

2 x 32 cbm Clamshell Buckets

2 x 14.5 cbm Clamshell Buckets

Boom & Belt Conveyor System

Belt conveyor capacity: 3000 mt/h

Boom distance from ship side: 72.5 mtr

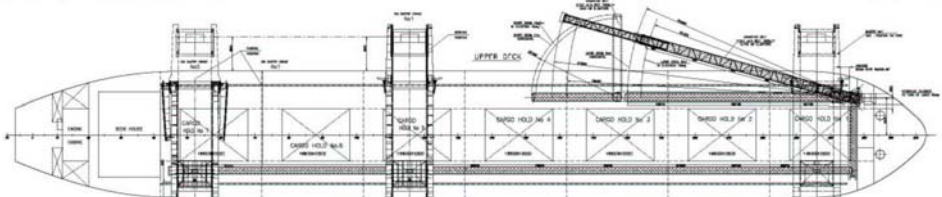
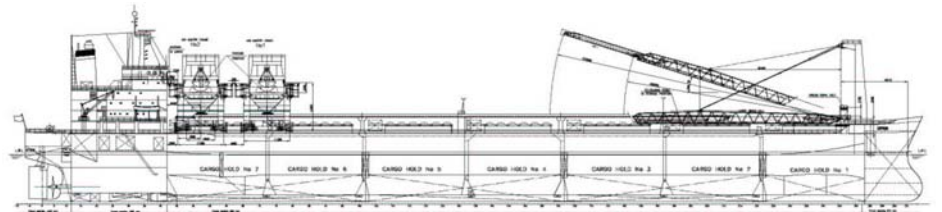
Primary boom: 54 mtr, Telescopic boom: 18.5 mtr

Short boom: 21 mtr

Holds / Hatches

7 holds / 7 hatches (McGregore type)

Total capacity: 75356 cbm



Vessel is fully equipped with mechanical out-trimming machinery